



TDM - How To install the RS232 service

Introduction

With TDM Digital Signage you have the ability to send RS232 commands. With this functionality it is possible to power on/off displays connected to your Windows machine.

This manual will explain how the RS232 software can be installed and configured.

Requirements

If you want to install the RS232 service you need to meet the following requirements:

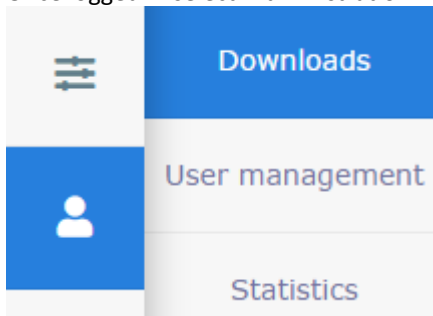
- Have administrator access to the TDM designer
- Have access to the Windows player which you want to use to send RS232 commands

How To install the RS232 service

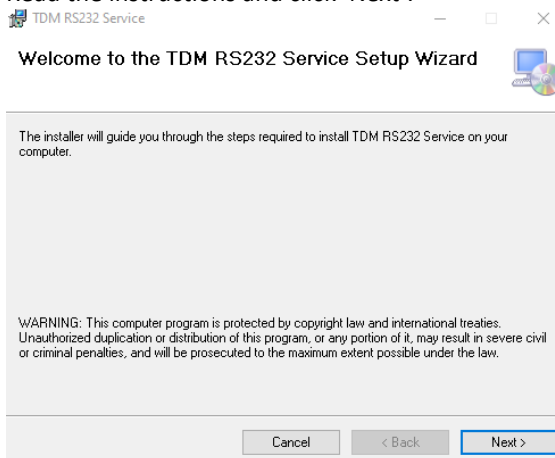
In this section, we explain how to install the RS232 service on your Windows machine. This requires an installation file, which you can download by logging on to your TDM Designer.

1. Login to the designer with an administrator account on your Windows based machine:
<https://designer.tdm signage.com>

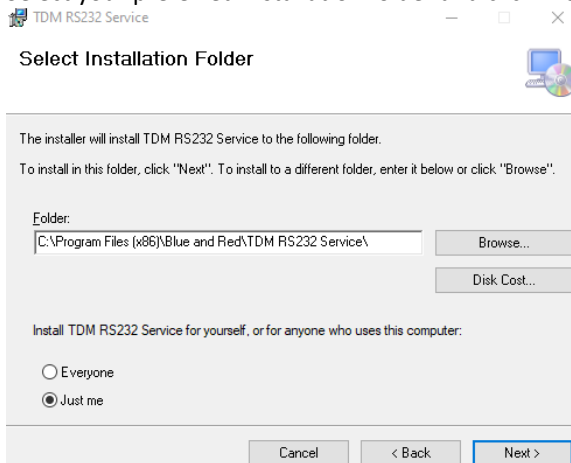
2. Once logged in select: Administration > Downloads



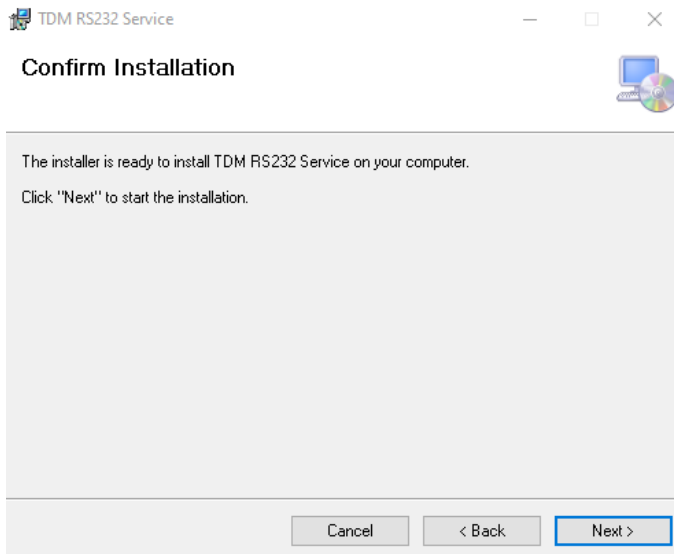
3. From here you can download the setup called 'TDM RS232 Service'.
4. Launch the downloaded setup on your Windows based machine to install the RS232 service.
5. Read the instructions and click 'Next'.



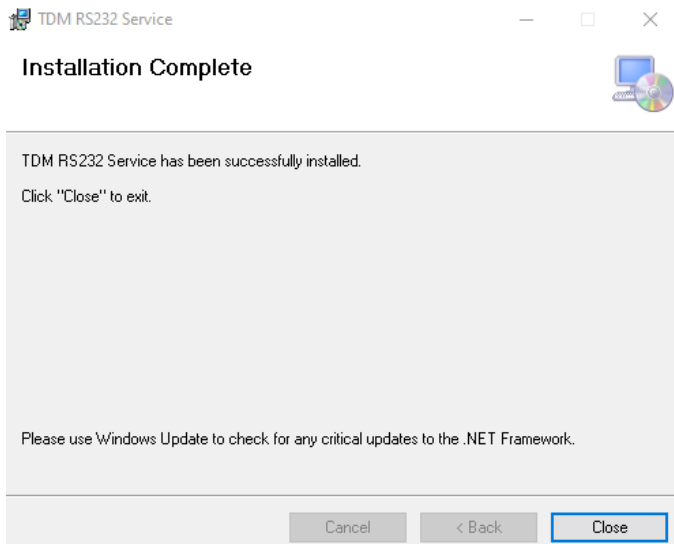
6. Select your preferred installation folder and click 'Next'.



7. Click 'Next' to start the installation.



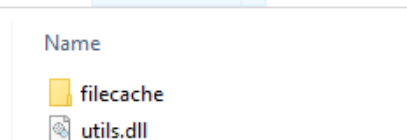
8. Select 'Close' once the installation has finished.



9. Now that the installation has finished we can start configuring the service. There are a few changes which we need to make. The thirist thing is copying the file called 'Utils.dll' from c:\TDMSignage to the installation folder of the RS232 service.

This can be found here: C:\Program Files (x86)\Blue and Red\TDM RS232 Service

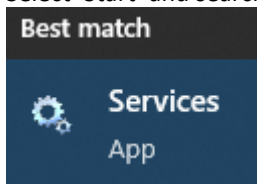
This PC > DATA DISK (C:) > TDMSignage



10. Now we can configure the COM port used for the connection together with the baudrate and the Databits. This can be configured in the file called 'RS232Service.exe.config'. This file can be found in the installation directory of the RS232 service. The file can be modified with a text editor like 'Notepad'.

```
<appSettings>
  <add key="ComPort" value="1"/>
  <add key="BaudRate" value="9600"/>
  <add key="DataBits" value="8"/>
</appSettings>
```

11. Once the values have been configured we can restart the RS232 service, this can be done as followed:
Select 'Start' and search for 'Services'.



12. Locate the service called 'TDM RS232 Service'. Once found right mouse click the service and select 'Restart'.
13. If everything is configured correctly the log file of the RS232 should mention that the schedules have been found. The log file can be found here: C:\Program Files (x86)\Blue and Red\TDM RS232 Service

It is the .txt file in the folder, if you open the file it should mention:

```
03:17:11.547 PM    INFO                Getting new schedules from webservice
03:17:11.903 PM    INFO                6 schedules found
```

We have finished configuring the RS232 service, the service will now send the commands on the configured time to the COM port configured in the configuration file.

How to configure RS232 schedules inside the designer

1. Please login to the designer with an administrator account: <https://designer.tdmsignage.com>
2. Then go to: Config Panel



3. Select the tab "RS232 schedules", from this tab it is possible to create new schedules.

RS232 SCHEDULES

4. When making a new schedule make sure it's at least 15 minutes in the future.

5. Use the commands below relative to your brand. Please contact the manufacturer or your hardware supplier in case the commands are not working. It could be that your device type requires different commands.

Sony	
Command	HEX Representation
Enable	x8C x00 x01 x02 x01 x90
Standby	
Power On	x8C x00 x00 x02 x01 x8F
Power Off	x8C x00 x00 x02 x00 x8E
Volume Up	x8C x00 x05 x03 x00 x00 x94
Volume Down	x8C x00 x05 x03 x00 x01 x95
Mute Toggle	x8C x00 x06 x02 x00 x94
Info (Display)	x8C x00 x0F x02 x00 x9D
Input HDMI 1	x8C x00 x02 x03 x04 x01 x96
Input HDMI 2	x8C x00 x02 x03 x04 x02 x97
Input HDMI 3	x8C x00 x02 x03 x04 x03 x98
Input HDMI 4	x8C x00 x02 x03 x04 x04 x99
Action Menu	x8C x00 x67 x03 x97 x36 xC3
Up	x8C x00 x67 x03 x01 x74 x6B
Down	x8C x00 x67 x03 x01 x75 x6C
Right	x8C x00 x67 x03 x01 x33 x2A
Left	x8C x00 x67 x03 x01 x34 x2B
Enter (OK)	x8C x00 x67 x03 x01 x65 x5C
Return (Back)	x8C x00 x67 x03 x97 x23 xB0
Home	x8C x00 x67 x03 x01 x60 x57

LG

Command

HEX Representation

Power On	x6B x61 x20 x30 x31 x20 x30 x31 x0D
Power Off	x6B x61 x20 x30 x31 x20 x30 x30 x0D
Volume Up	x6D x63 x20 x30 x31 x20 x30 x32 x0D
Volume Down	x6D x63 x20 x30 x31 x20 x30 x33 x0D
Mute	x6B x65 x20 x30 x31 x20 x30 x30 x0D
Unmute	x6B x65 x20 x30 x31 x20 x30 x31 x0D
Info (Display)	x6D x63 x20 x30 x31 x20 x61 x61 x0D
Menu	x6D x63 x20 x30 x31 x20 x34 x33 x0D
Up	x6D x63 x20 x30 x31 x20 x34 x30 x0D
Down	x6D x63 x20 x30 x31 x20 x34 x31 x0D
Right	x6D x63 x20 x30 x31 x20 x30 x36 x0D
Left	x6D x63 x20 x30 x31 x20 x30 x37 x0D
Enter (OK)	x6D x63 x20 x30 x31 x20 x34 x34 x0D
Return (Back)	x6D x63 x20 x30 x31 x20 x32 x38 x0D
Exit	x6D x63 x20 x30 x31 x20 x35 x62 x0D
Picture Size: Just Scan	x6B x63 x20 x30 x31 x20 x30 x39 x0D

Samsung

Command	HEX Representation
Power On	x08 x22 x00 x00 x00 x02 xD4
Power Off	x08 x22 x00 x00 x00 x01 xD5
Volume Up	x08 x22 x01 x00 x01 x00 xD4
Volume Down	x08 x22 x01 x00 x02 x00 xD3
Mute Toggle	x08 x22 x02 x00 x00 x00 xD4
Select HDMI 1	x08 x22 x0a x00 x05 x00 xc7
Select HDMI 2	x08 x22 x0a x00 x05 x01 xc6
Select HDMI 3	x08 x22 x0a x00 x05 x02 xc5
Select HDMI 4	x08 x22 x0a x00 x05 x03 xc4
Info (Display)	x08 x22 x0D x00 x00 x1F xAA
Menu	x08 x22 x0D x00 x00 x1A xAF
Up	x08 x22 x0D x00 x00 x60 x69
Down	x08 x22 x0D x00 x00 x61 x68
Right	x08 x22 x0D x00 x00 x62 x67
Left	x08 x22 x0D x00 x00 x65 x64
Enter (OK)	x08 x22 x0D x00 x00 x68 x61
Return (Back)	x08 x22 x0D x00 x00 x58 x71
Exit	x08 x22 x0D x00 x00 x2D x9C
Picture Size: Screen Fit	x08 x22 x0B x0A x01 x05 xBB